



FlexStone[®]

**VETRICAL
STAMPING**

www.flexstoneinc.com

PROTECTING WHAT WE VALUE

WHAT IS VERTICAL STAMPING?

Stamped concrete, also referred to as imprinted concrete, textured or embossed concrete, is concrete that has been made to look like another material such as granite, stone, tile, slate, etc.

Stamped concrete has been around for many decades and is found on driveways, pool decks, entryways, patios, courtyards, and walkways, both commercial and residential properties. FlexStone takes this proven technology one step ahead with its 5 step methodology, which enhances the aesthetic look of the floor with its unique shadow impact technique.

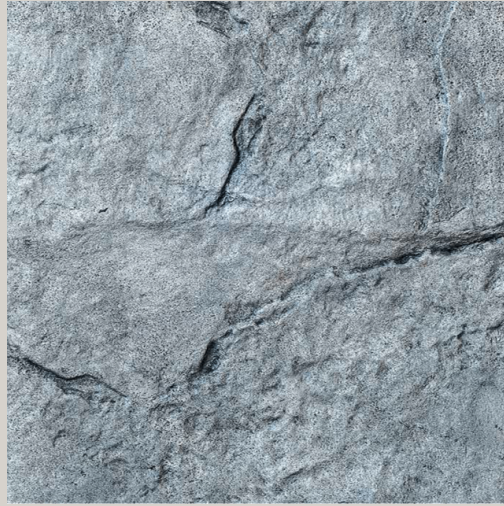
Vertical Stamping is very suitable for one of a kind and unique application; it is also a perfect choice for designers to use this product in houses, restaurants, hotels, clubs, showrooms and other such suitable areas.

FlexStone[®]



VS001

Granite Texture Skin



VS002

Stone Texture Skin



VS003

Travertine Texture Skin



VS004

Field Stone Stamp



VS005

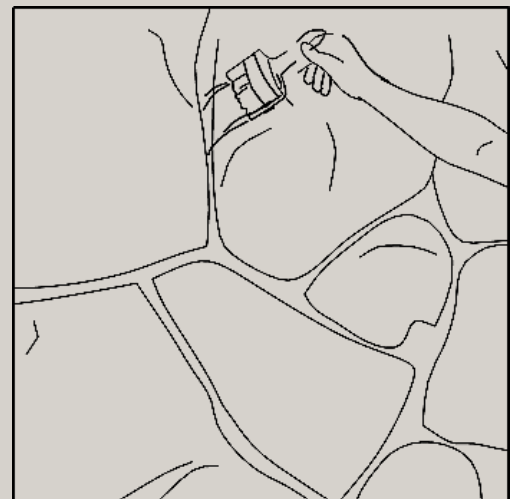
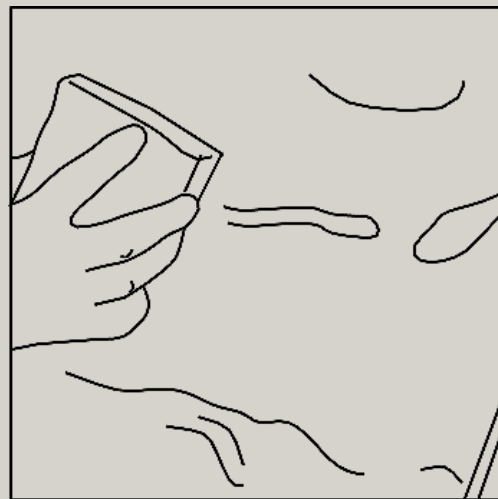
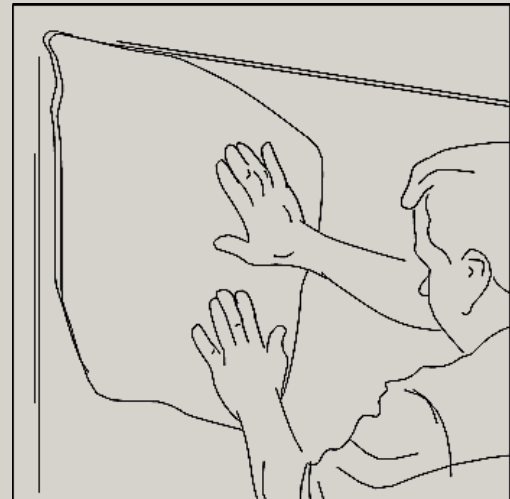
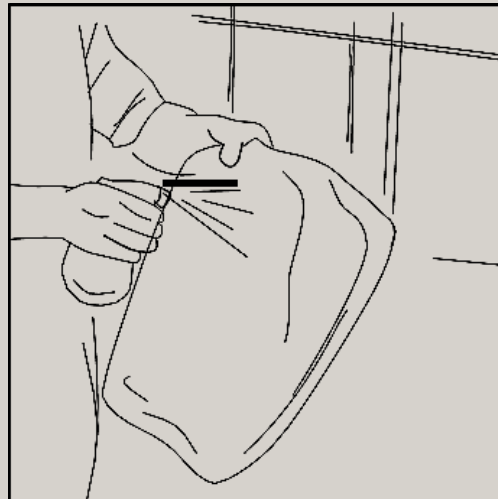
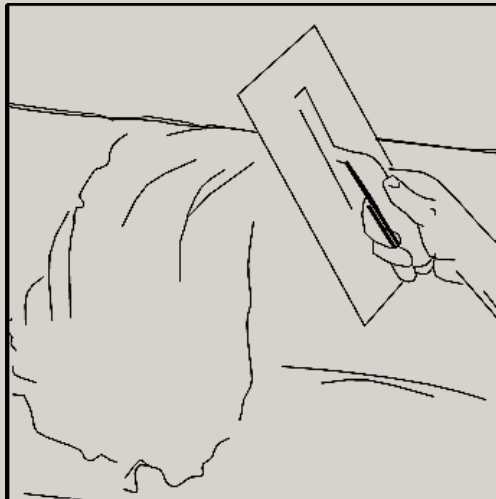
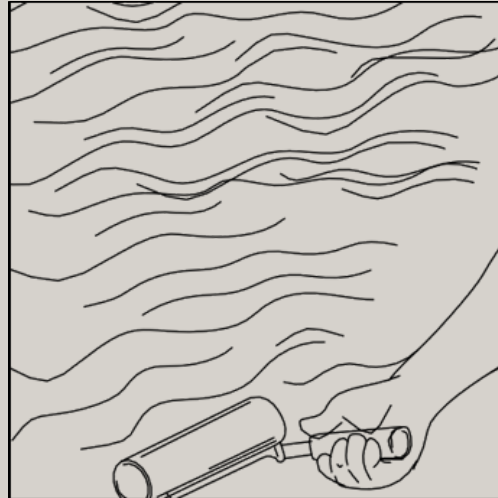
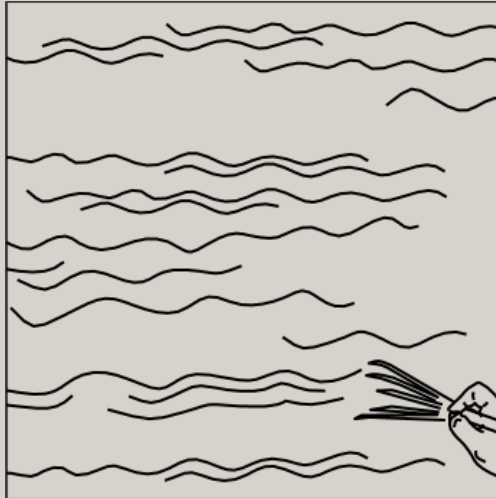
Stacked Stone Stamp

FlexStone[®]

APPLICATION PROCESS

1. Application of Primer 100 on the surface to ensure durable installation.
2. Application of 10mm–12mm of wall mix on the desired wall.
3. Imprinting the desired texture and material on the wall surface with polyurethane stamps.
4. Once the material is dry, grouting and colouring is done on the wall to achieve desired finish.
5. Finally, the top coat sealer is applied on the stamped wall.

APPLICATION OF VERTICAL STAMPING



FlexStone®



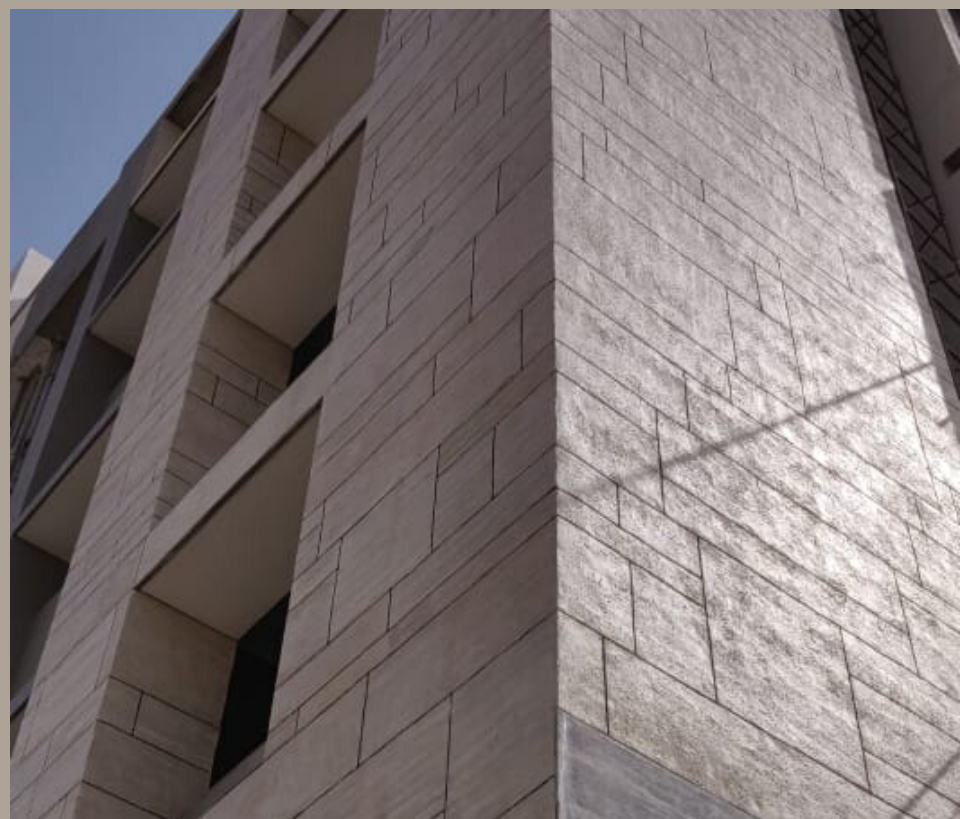
FlexStone®



FlexStone®



FlexStone®



FlexStone®

FlexStone®

CONTACT US

WEBSITE

www.flexstoneinc.com

EMAIL

flexstoneahmedabad@gmail.com

CALL & WHATSAPP

+91 99797-58333,
+91 99797-58850, 079 4002-0385



HEAD OFFICE

FlexStone Marketing LLP Shapath 4, Shop No.4, Ground Floor, Opp. Karnavati Club, SG Highway, Ahmedabad. Gujarat. 380015 INDIA.